



Where to Get Information?

U.S. Department of Health & Human Services
and SAMSHA National Clearinghouse
for Alcohol and Drug Information
www.samhsa.gov or 800-662-HELP

To Report Drug Activity Call The Attorney
General's tip line at 800-444-8006
www.attorneygeneral.gov

Senator Greg Rothman
34th District
SenatorRothman.com

Harrisburg Office
Senate Box 203034
168 Main Capitol Building
Harrisburg, PA 17120
717-787-1377

New Bloomfield District Office
25 E. McClure St.
New Bloomfield, PA 17068
717-582-2454

Shippensburg District Office
81 Walnut Bottom Road
Shippensburg, PA 17257
717-844-5441

Silver Spring District Office
4 Flowers Drive, Suite 3
Mechanicsburg, PA 17050
717-283-4200

[Facebook.com/SenatorRothman](https://www.facebook.com/SenatorRothman)
x.com/rothman_greg

DON'T BE A DOPE

IT COULD COST YOU YOUR LIFE



Is a 30-second or 30-minute “high”
worth risking the rest of your life?



That is the kind of risk you take when you use drugs. No matter what anyone tells you, the fact is that drugs kill. Maybe not the first time, but sooner or later using drugs will catch up with you.

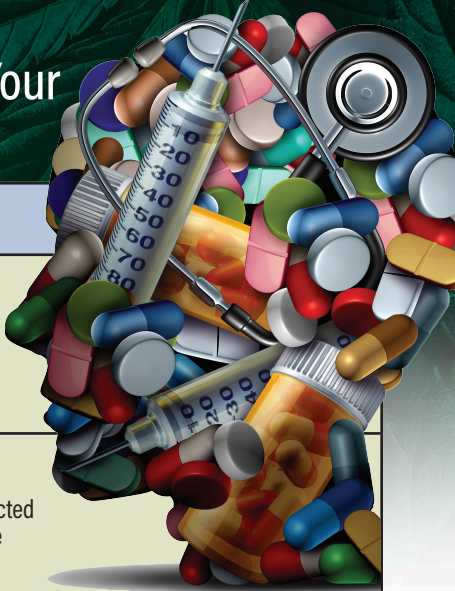
Everyone feels the pressure to go along with the crowd, to fit in, to belong. When you want to be accepted by your friends, peer pressure can be very powerful. But don't be a dope and gamble with your life... real friends accept you without compromise. Most kids believe that taking drugs is wrong and they do not want to associate with people who use them.

Some people believe that alcohol, marijuana and other drugs will make them feel at ease. Others think that drugs enhance the senses and make experiences more memorable.

In reality, —
**PEOPLE WHO USE DRUGS
LOSE CONTROL**

KNOW THE FACTS

Drugs Destroy Your Mind and Body



	Immediate Effects	Long Term Effects
Alcohol	<ul style="list-style-type: none">Initial relaxationLoss of inhibitionsImpaired coordinationIncreased risk-takingBad judgmentDanger in driving car	<ul style="list-style-type: none">Gastritis, pancreatitisCirrhosis of the liverCertain cancers of the gastro-intestinal trackHeart diseaseBrain and nerve damage
Cocaine	<ul style="list-style-type: none">Increased heart rate and blood pressure which leads to increased risk of burst blood vessels or heart failureReduced appetiteFaster breathingIncreased alertnessDilation of pupils	<ul style="list-style-type: none">Strong psychological dependenceAIDS and hepatitis if injected with used/shared needleUlcerated mucous membrane of the nose
Fentanyl	<ul style="list-style-type: none">DrowsinessConfusionConstipationNauseaVomitingSlowed breathing	<ul style="list-style-type: none">Chronic and severe constipation, which may lead to serious health problems such as bowel obstructionBreathing problems during sleepHeart attack and heart failureImmune system suppressionHormonal and reproductive issuesAnxiety, depression, other mood disorders
Heroin	<ul style="list-style-type: none">Depressed breathingClouded mental functioningDrowsinessNausea and vomitingSuppression of pain	<ul style="list-style-type: none">Changes the physical structure and physiology of the brainProfound degrees of tolerance and physical dependenceSevere withdrawal symptomsWeakened immune systemRespiratory illnessesMuscle weakness, partial paralysisDepressionComa
Inhalants	<ul style="list-style-type: none">Nausea, sneezing, coughing and nose bleedsFatigue, poor coordinationIncreased heart and breathing ratesImpaired judgementLarge doses - unconsciousness and death	<ul style="list-style-type: none">Permanent damage to nervous systemFatigue and weight lossAnxiety
LSD	<ul style="list-style-type: none">Rapid pulse, increased heart rate, elevated blood pressure and body temperatureLoss of appetiteSleeplessness and tremors	<ul style="list-style-type: none">PanicConfusionSuspicion and anxietyLoss of control
Marijuana	<ul style="list-style-type: none">Increased heart rateBloodshot eyesDry mouth and throatImpaired short term memory and logical thinkingAltered sense of time	<ul style="list-style-type: none">Psychological dependenceLoss of drive and interest in sustained activityRegular Heavy UseChronic bronchitis, lung cancerImpaired learningDecreased immunity
Methamphetamines	<ul style="list-style-type: none">Increased activityReduced appetiteShakingDangerously high body temperature	<ul style="list-style-type: none">Suicidal or homicidal thoughtsViolent behaviorTooth decayHallucinationsInsomniaDamage to the kidneys, lungs, brain, and liver
PCP	<ul style="list-style-type: none">Sense of distance and estrangementPoor muscle controlDulled sensesProfuse sweatingIncreased breathing, blood pressure and pulse	<ul style="list-style-type: none">Persistent memory problems and speech difficultiesDepression, anxiety, violent behaviorParanoia and hallucinationsConvulsions, coma, heart and lung failure

WHEN YOU BREAK THE LAW, YOU PAY THE PRICE

Possessing or selling drugs is punishable by fines and imprisonment

- ➡ Possessing a single unit of cocaine can result in up to one year imprisonment and a \$5,000 fine.
- ➡ Selling, distributing or transporting cocaine can result in up to five years imprisonment and a \$15,000 fine.
- ➡ Possession of any amount of Fentanyl is a minimum of two years in prison and a \$5,000 fine.
- ➡ A conviction of selling drugs to a minor faces a mandatory minimum sentence of one year.
- ➡ A mandatory minimum sentence of two to four years applies if the sale or delivery to a minor takes place within 1,000 feet of a school, college or university, if the intent was for the minor to sell or deliver the drugs, or if the intent was for the minor to develop an addiction to drugs.

Pennsylvania's Zero Tolerance Law

Pennsylvania's Zero Tolerance Law carries serious consequences for those under 21 who are convicted of driving with any amount of alcohol in their blood. Those under 21 who are convicted of driving under the influence with a .02 blood alcohol content, or greater, face severe penalties, including a 12- to 18-month license suspension, 48 hours to six months in jail, and fines from \$500 to \$5,000.

